



## Department of Conservation and Recreation Division of Water Supply Protection Wachusett Reservoir Fishing Regulations

The Wachusett and Quabbin Reservoirs provide water for 53 cities and towns within the Commonwealth. The Sudbury Reservoir is the system's backup supply. The land surrounding the reservoirs is managed by the DCR Division of Water Supply Protection to protect the quality of the water, enhance ecological integrity, and ensure the future protection of these valuable natural resources from pollution, encroachment, and environmentally damaging public use.

### Strictly Prohibited on Wachusett Reservoir Watershed Property:

- ⊘ Any bodily contact with the water
- ⊘ Disposing of human waste, trash, or litter
- ⊘ Alcoholic beverages
- ⊘ Motorized vehicles
- ⊘ Swimming or wading
- ⊘ Boating (except as designated below)
- ⊘ Smoking or building fires
- ⊘ Metal detectors
- ⊘ Animals/pets

DCR permits **Shore Fishing only** at the Wachusett and Sudbury Reservoirs from dawn to dusk. **The fishing season at the Wachusett Reservoir opens on the First Saturday in April, providing no ice is present, and extends through December 31.** Possession of a valid Massachusetts fishing license is required by individuals 15 years of age or older. DCR and its employees are not responsible for any damage to, or loss of life which may be incurred in connection with the public use of the reservoirs. Follow all posted regulatory signage.

Wachusett Reservoir fishing access is allowed through the following areas:

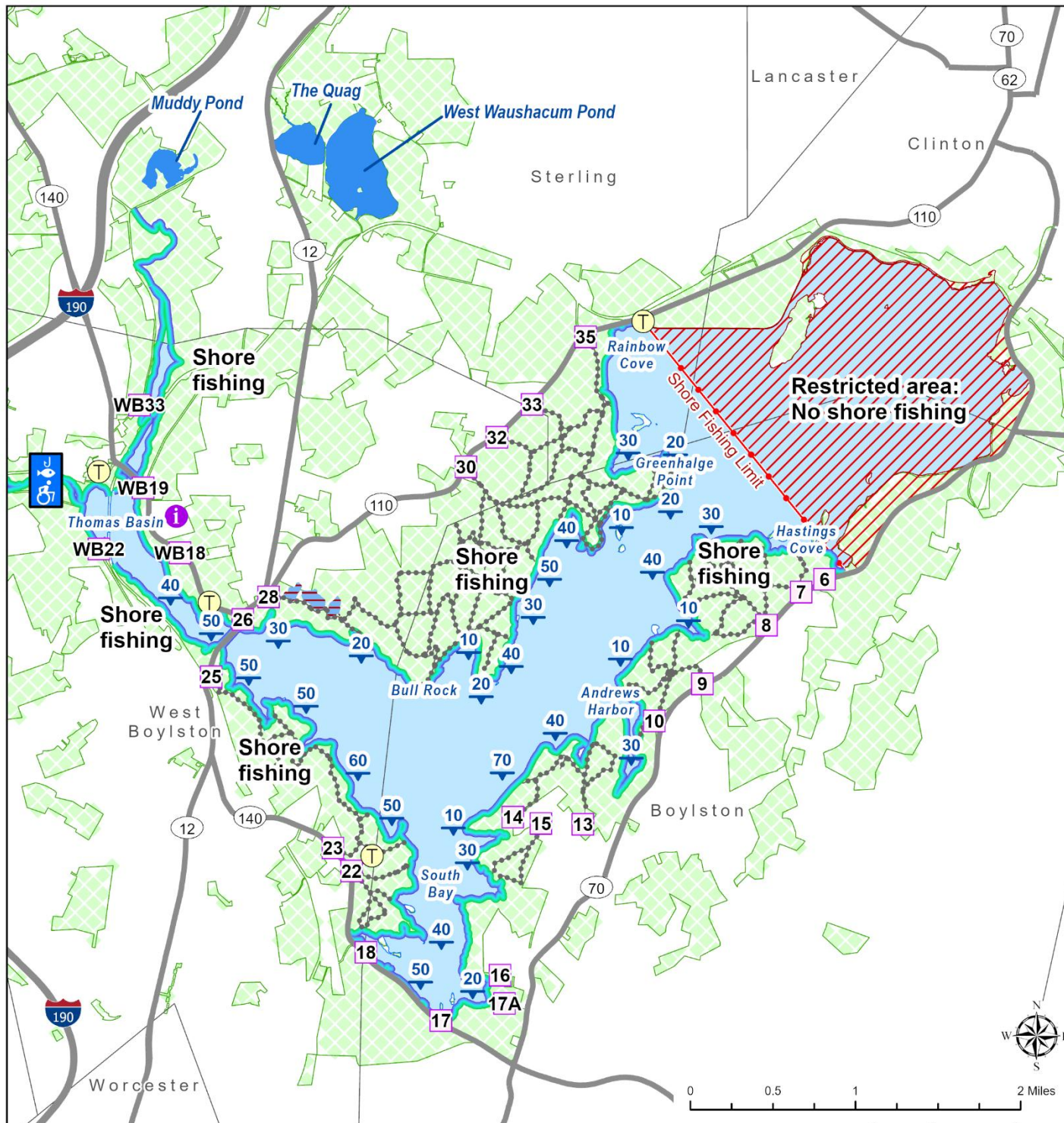
- Route 70 – Gates 6 to 17A
- Route 140 – Gates 17 to 23
- Route 12/110 – Gates 25 to 35
- West Boylston – Thomas Basin

FISHING IS PROHIBITED FROM ANY OTHER AREAS.

Fishing at West Waushacum, the Quag, and Muddy Ponds in Sterling extends from the first Saturday in April through November 30. **Ice Fishing Is Not Permitted.** Boats up to 14 feet in length, canoes, and kayaks are permitted at the Sterling Ponds. All users must wear a U.S. Coast Guard approved Personal Flotation Device from September 15 to May 15. Only electric outboard motors may be used.

**Emergency Numbers (911)**  
**State Police – Wachusett Reservoir: (508) 829-8410**  
**State Police – Sudbury Reservoir: (508) 929-3232**  
**DCR Watershed Rangers: (978) 365-3800**  
**MEMA State Control (24hr Dispatch): 508-820-1428**

Caution: These watershed lands are managed for forest and wildlife improvements. Certain areas may occasionally be posted when forestry personnel and equipment are operating in the forest. Please be careful to avoid these areas.



## Wachusett Reservoir Fishing Map

- DWSP Office
- Portable toilet (seasonal)
- Accessible fishing platform
- Gate for day access only
- Water Depth in feet
- Road
- Pedestrian access roads
- Shoreline fishing
- Fishing pond
- Wachusett Reservoir
- No fishing allowed
- Shoreline fishing limit
- Restricted area
- Wachusett land boundary
- Town boundary

**Emergency Information:**  
 MA Emergency Management  
 Agency: (508) 820-1428  
 State Police: (508) 829-8410  
 Ranger Station: (978) 365-3800  
 DWSP Office: (508) 792-7806



0 0.5 1 2 Miles