



NO Service, NO Problem – Take the DWSP Hunting Map with you!

Using the free app – **ArcGIS Field Maps** – you can download a copy of the Hunting Map to take in the woods with you on your mobile device. This is great when you are hunting somewhere remote with **no cell service**.

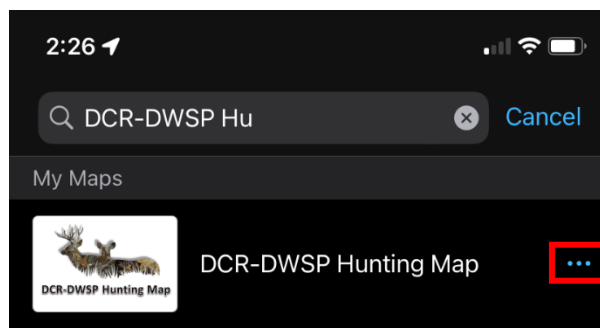
Download ArcGIS Field Maps from the App Store to get started ([iOS](#), [Android](#)).

Use the following instructions to locate the Hunting Map and download a copy to your mobile device. *For best results, please ensure you are connected to WiFi or have at least 2 bars of cell service.*

1. Open the app and click "Skip Sign In".



2. Using the search box at the top of your screen, type "DCR-DWSP Hunting Map".
3. Click the ellipsis (...) to the right of the result and select "Add Offline Area". *You can also click directly on the result to open the map without downloading an offline copy.*



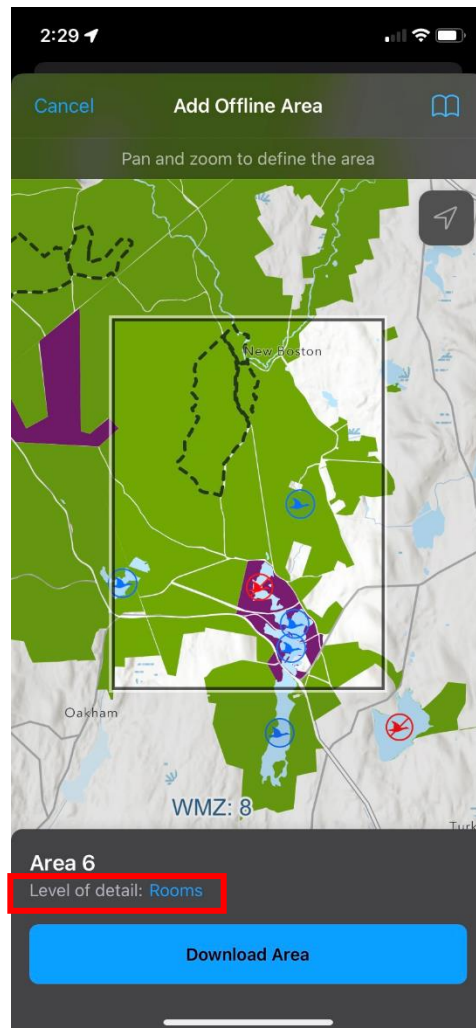
4. On the next screen determine the area you want to download to your mobile device. *Use your fingers to pan and zoom to that location.*
5. Locate the rectangular box in the center of the map. If the box does not contain the entire area you wish to download, click "Level of detail: Room" at the bottom of your screen and select "Rooms" or "Small Building" until your area of interest is contained within the rectangle. Everything within the box will be downloaded to your mobile



device. "Room" or "Small Building" should be large enough to cover your area of interest!

6. Click the large blue Download Area button at the bottom of your screen.

Wait for the map to download. Please be patient as this could take a few minutes to complete.



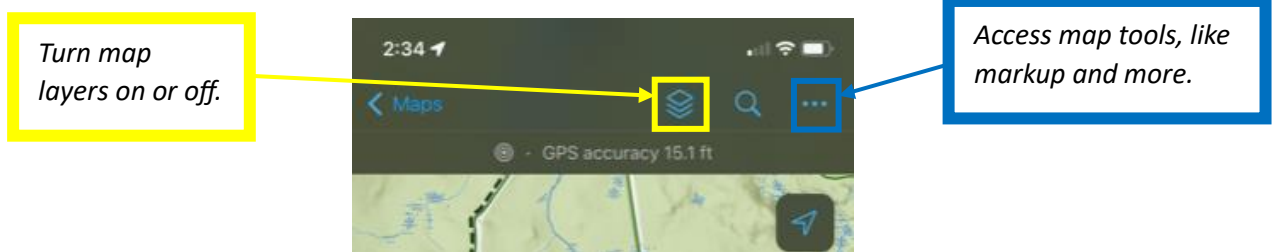
Enabling Location Alerts – You will be asked to *enable location alerts* when you open the map. This will enable a feature that will notify you when you enter/exit hunting setback areas. Your location is only used within the app to determine when to notify you of entering or exiting a hunting setback area. Your location is not shared with DCR-DWSP staff or other hunters using the map. Your hunting spot is safe!

Please be aware that your mobile's devices GPS accuracy will be displayed at the top of the map within ArcGIS Field Maps. This will help you to understand how reliable your location reading is.



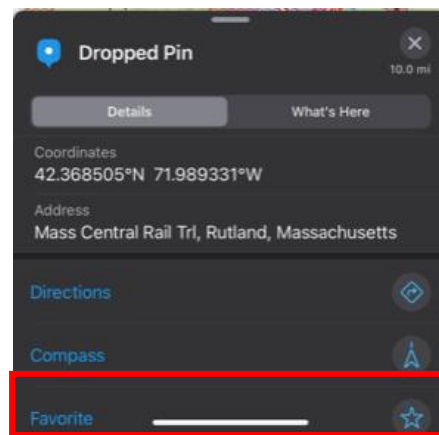
Tips on using the Map:

Using Field Maps lets you do more than just see where you are! You can draw on the map, turn map layers on/off, drop pins (and add them as favorites – think tree stand, or parking spot), navigate to pins using a compass and more.

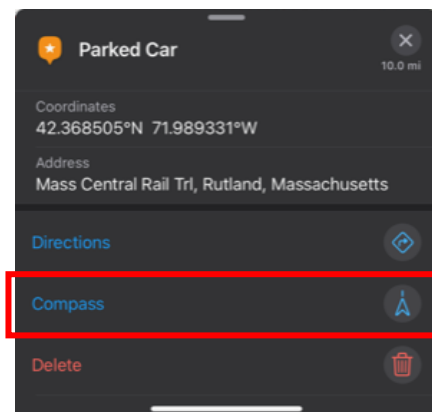


Drop a pin:

1. Press and hold on your mobile device's screen to drop a pin.
2. At the bottom of the slider, select Favorite to name this pin in your map.



3. Select your pin and click the Compass option to navigate to a point. This will provide a bearing and distance, along with a dotted line for you to follow. The map will swivel based on the direction you're facing.





Disclaimer: *The data in this map is provided for informational and planning purposes only. It is not intended to be used for authoritative definition of legal boundaries or setbacks, and the user should understand that parcel representations generally are not based on property surveys. The Commonwealth of Massachusetts, DCR, and DWSP assume no responsibility for loss or damage incurred as a result of any user's reliance on this data; DWSP are not responsible for the misuse or misrepresentation of the data presented in these maps. Components of this map are amended regularly. All maps and other material provided herein are protected by copyright. Permission is granted to copy and use the materials herein.*