



Bradley Palmer State Park

Welcome to DCR's Bradley Palmer State Forest

A former private estate boasting a remarkable Arts and Crafts style mansion, Bradley Palmer offers over 700 acres of park land primarily used for hiking, horseback riding and biking.

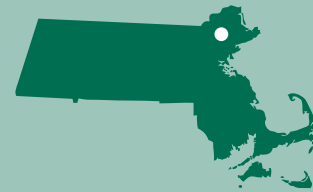
Bradley Palmer is part of the Massachusetts state park system and is managed by the Massachusetts Department of Conservation and Recreation (DCR), an agency of the Executive Office of Energy and Environmental Affairs.

DCR oversees 450,000 acres of parks, forests, beaches, bike trails, watersheds, and dams. Its mission is to protect, promote, and enhance the state's natural, cultural, and recreational resources. To learn about DCR and to discover more parks and recreational opportunities within the Massachusetts state parks, visit www.mass.gov/dcr. For Bradley Palmer, visit www.mass.gov/dcr/parks/northeast/brad.htm

♥ *Designated by a heart symbol, Healthy Heart Trails are pathways or trails used for hiking or walking that are easy to moderate in activity level and intended for routine use to help build a healthy heart.*

TRAIL USE GUIDELINES AT BRADLEY PALMER

- Stay on designated trails and roads.
- Observe all posted rules and regulations.
- **Off-Road Vehicle (ORV) use prohibited.**
- Be alert for other trail users:
 - Hikers:** Allow bicyclists and equestrians to pass.
 - Bicyclists:** Control your bike—do not skid.
 - Avoid startling horses and hikers— announce yourself.
 - Equestrians:** Control your horse.



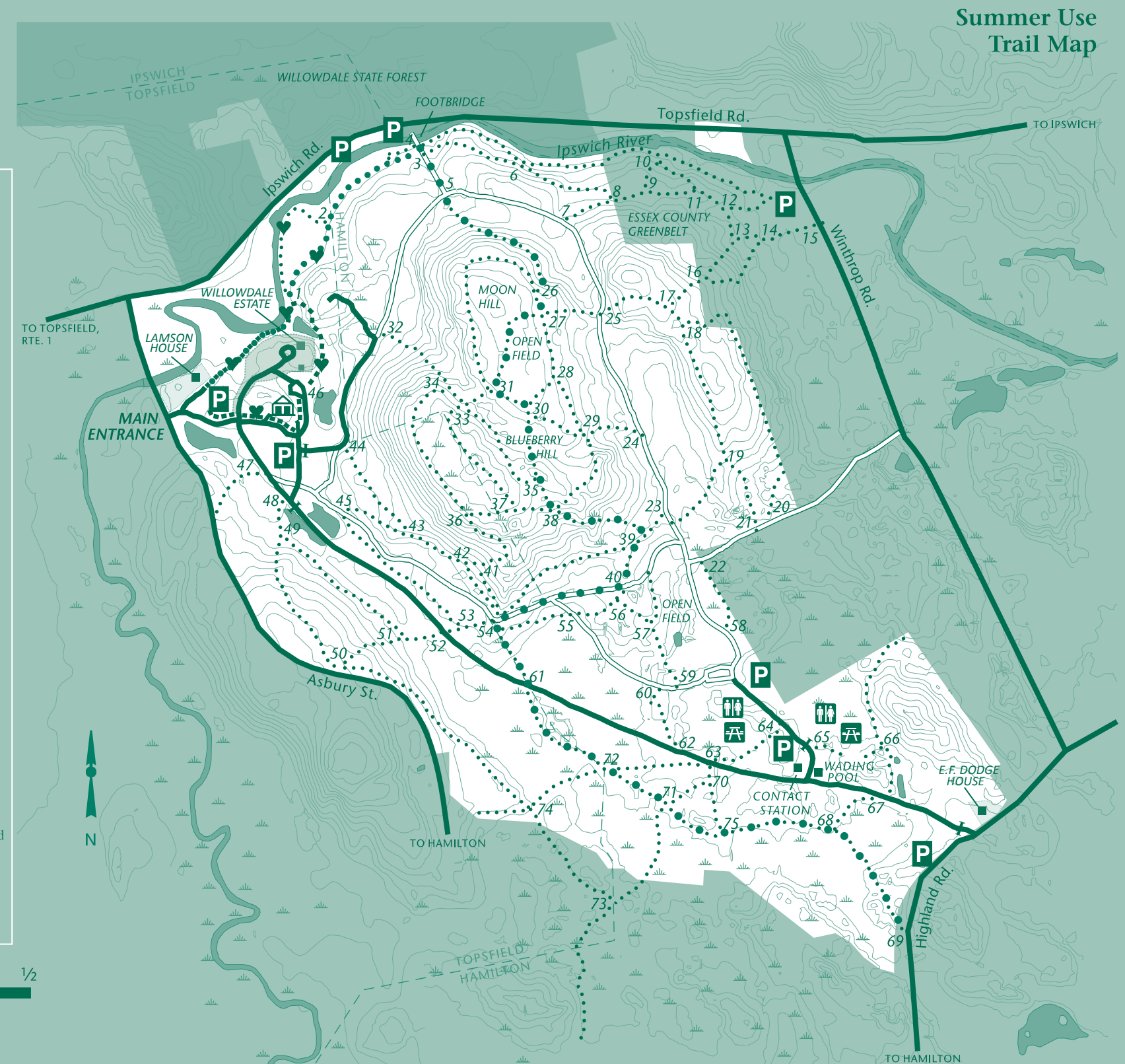
LEGEND: SUMMER USE

- Bradley Palmer State Park
- Paved Road
- Unpaved Road
- Trail
- Accessible Trail
- Interpretive Trail
- Healthy Heart Trail
- Bay Circuit Trail
- Picnic Area
- Restrooms
- Parking
- 1-75 Trail Intersection
- Park Headquarters
- Closed Gate*
- Town Boundary
- Wetland
- Brook, River
- Pond
- Contour Line (10' Interval)
- Willowdale State Forest
- Historic Curatorship Lease Area
- Access only during scheduled events & programs

* Gates are in place to discourage motor vehicle use. All other trail users are welcome to travel beyond gate.



SCALE IN MILES



Summer Use Trail Map

TRAIL MAP

Bradley Palmer State Park
40 Asbury St.
Topsfield, MA 01983
(978) 887-5931
207