



# Lake Congomond

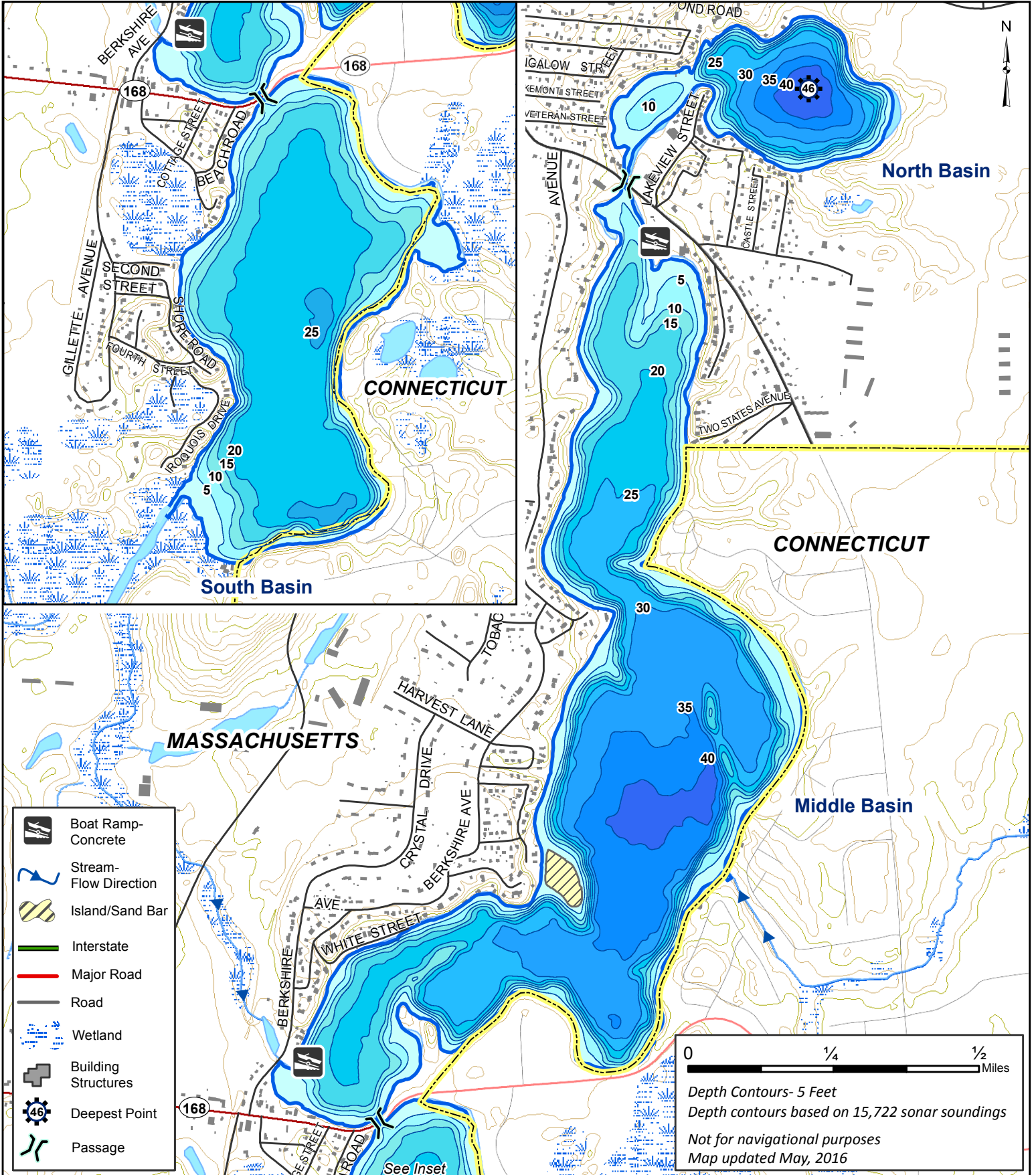
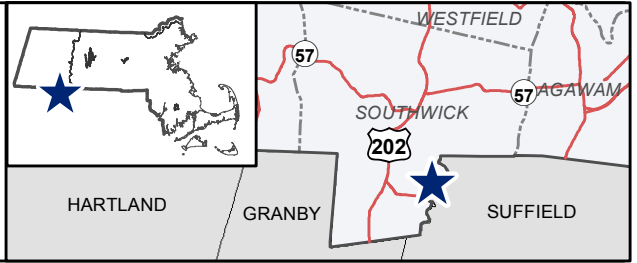
477 Acres

Southwick

Westfield River Watershed

Coordinates: 72°45'25"W 42°02'29"N

USGS Quad: Southwick



- Boat Ramp  
Concrete
- Stream  
Flow Direction
- Island/Sand Bar
- Interstate
- Major Road
- Road
- Wetland
- Building Structures
- Deepest Point
- Passage

0 1/4 1/2 Miles

Depth Contours- 5 Feet  
 Depth contours based on 15,722 sonar soundings  
 Not for navigational purposes  
 Map updated May, 2016



# Lake Congamond, Southwick

## General Information

Lake Congomond is a 477 acre great pond located off of Route 168 on the Massachusetts-Connecticut border in Southwick. Lake Congomond is comprised of three basins connected by waterways which are navigable to all but the largest of boats. The North basin (47 acres) has an average depth of 21 feet and a maximum of 46 feet, the middle basin (284 acres) has an average depth of 22 feet with a maximum of 42 feet, and the south basin (146 acres) has an average of 16 feet with a maximum of 27 feet. Water clarity varies among basins, and the bottom is generally mud with scattered areas of gravel and cobble. Aquatic vegetation is patchy and generally not abundant due to the application of herbicides. With the exception of the east side of the north basin, the shoreline is heavily developed with year round residences. Congomond Lake hosts multiple competitive bass tournaments each year and receives heavy recreational use during summer.

## Recreational Access

The town of Southwick manages two public boat ramps in the middle basin where watercraft may be launched for a fee. The north ramp (72°45'25.90"W 42°2'28.95"N) is located off Point Grove Road on the northern shore of the middle basin and is a double concrete ramp with an adjacent fishing pier, small picnic area, and parking lot suitable for roughly 30 trailers. The south ramp (72°46'7.35"W 42°1'14.55"N) is located off Berkshire Road on the southeastern shore of the middle basin and is a single concrete ramp (with a sharp drop off!) and an adjacent parking area suitable for roughly 18 trailers. Shoreline access is limited to areas adjacent to the ramps. Please contact the offices of the town of Southwick for additional information, fee structure, and/or restrictions pertaining to public access of Lake Congomond.

## Fish Populations

The following fish species were found during MassWildlife surveys: Largemouth Bass, Smallmouth Bass, Chain Pickerel, Yellow Perch, White Perch, Black Crappie, Bluegill, Pumpkinseed, Rock Bass, Brown Bullhead, Common Carp, White Sucker, landlocked Alewife, Banded Killifish, and Golden Shiner. The middle basin of Lake Congomond is also stocked with trout every spring and fall.

## Fishing

Lake Congomond is renowned for its largemouth bass fishery which commonly produces fish exceeding 5lbs. Fishing for stocked trout is also popular during spring and fall but the scarcity of cold oxygenated water during summer limit the ability of trout to survive multiple seasons and grow to trophy sizes. Lake Congomond is also known for its large Yellow Perch and Black Crappie which can be caught throughout the year. Lake Congomond has produced Largemouth Bass, Smallmouth Bass, Chain Pickerel, sunfish, Black Crappie, Yellow Perch, and Brown Trout that meet minimum sizes for recognition by the Freshwater Sportfishing Awards Program.

## Useful Links:

[Get your Fishing License](#)

[Freshwater Fishing](#)

[Trout Stocking Information](#)

[Freshwater Sportfishing Awards Program](#)

## Learn more:

[Mass.gov/MassWildlife](http://Mass.gov/MassWildlife)

## Connect with us:

[Facebook.com/MassWildlife](https://Facebook.com/MassWildlife)

## Your local

### MassWildlife office:

East Street  
Belchertown, MA 01007  
(413) 323-7632

## STOP AQUATIC HITCHIKERS!

Prevent the transport of nuisance species.  
Clean all recreational equipment.  
[ProtectYourWaters.net](http://ProtectYourWaters.net)

Updated: 2016